

Disability in Myanmar

2014 - 2019

This infographic shares information from MIMU's Analytical Brief, *Disability in Myanmar (2014-2019)* which focuses on the situation of persons with disabilities in Myanmar. More at themimu.info/disability-analysis

MIMU



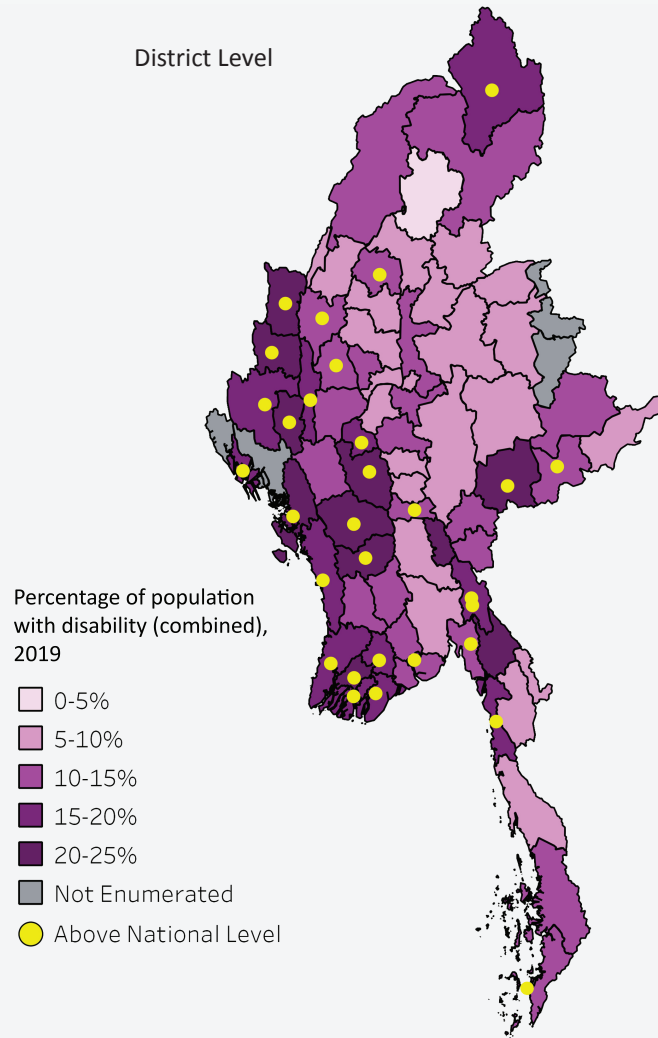
Almost 6 million people in Myanmar have one or more disabilities

Myanmar's disability prevalence rate in 2019 was **13%**, meaning nearly **5.9 million** people, five years and older, have at least one disability.



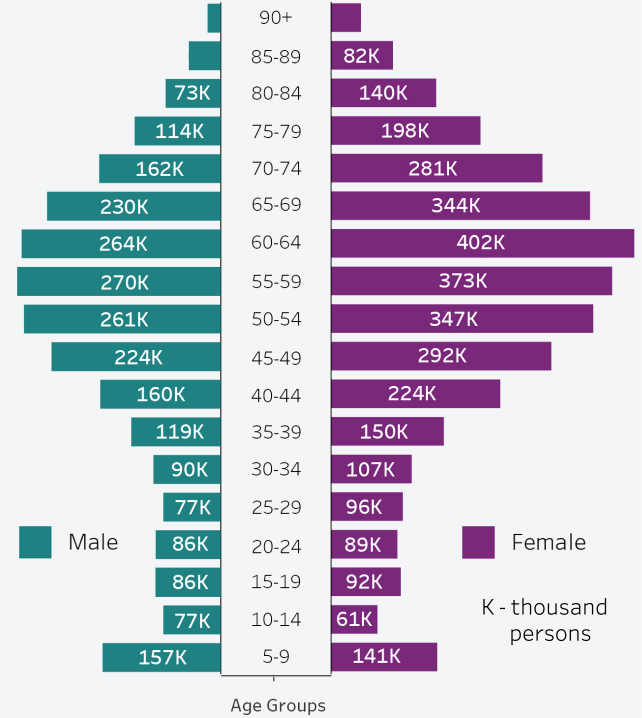
Myanmar's western areas and Kayin State show the highest levels of disability

In 2019, **Chin, Ayeyarwady, Rakhine and Magway and Kayin** had the highest percentages of population with disabilities, particularly in **Chin and Ayeyarwady** which both have **significantly higher percentages than national average**.



Countrywide, more females are affected by disability than males

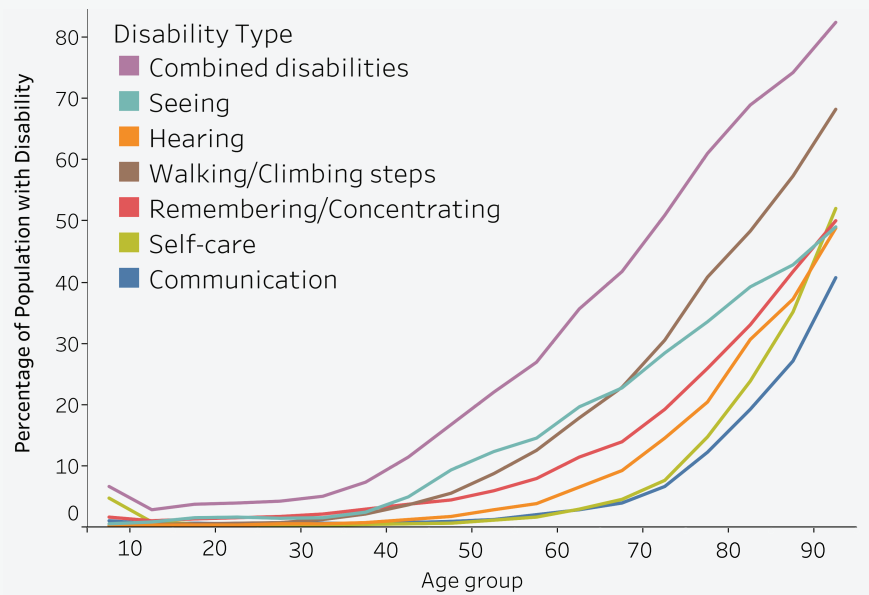
Although the percentage of population with disability was slightly higher for females, the absolute **number of females** with disabilities was **significantly larger** than for males.



Estimated Population with Disabilities, 2019

Lack of healthcare infrastructure and a growing aged population are the leading causes of high disability prevalence

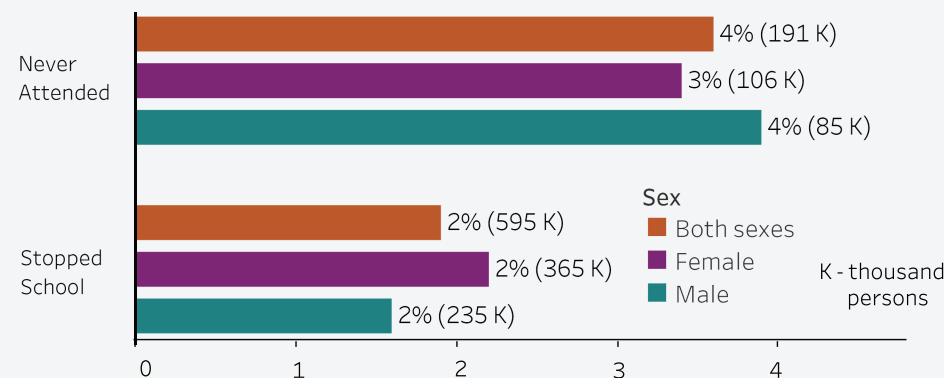
Weaknesses in healthcare infrastructure disproportionately affect Myanmar's **rapidly growing aged population**, pushing the country's disability prevalence rate up while reducing individuals' quality of life.



Children with disabilities are more likely to be excluded from the formal education system

Illness, injury or disability were the cause of an estimated **600,000** school-age children **stopping school** in Myanmar in 2019/2020, as well as **200,000** persons aged 3 and over **never attending school** at all. More efforts are needed to create an **inclusive environment at school** for children with disabilities.

Percentage of population aged 3 years and over who had stopped school as of the current year or never attended school due to illness, injury or disability, 2019

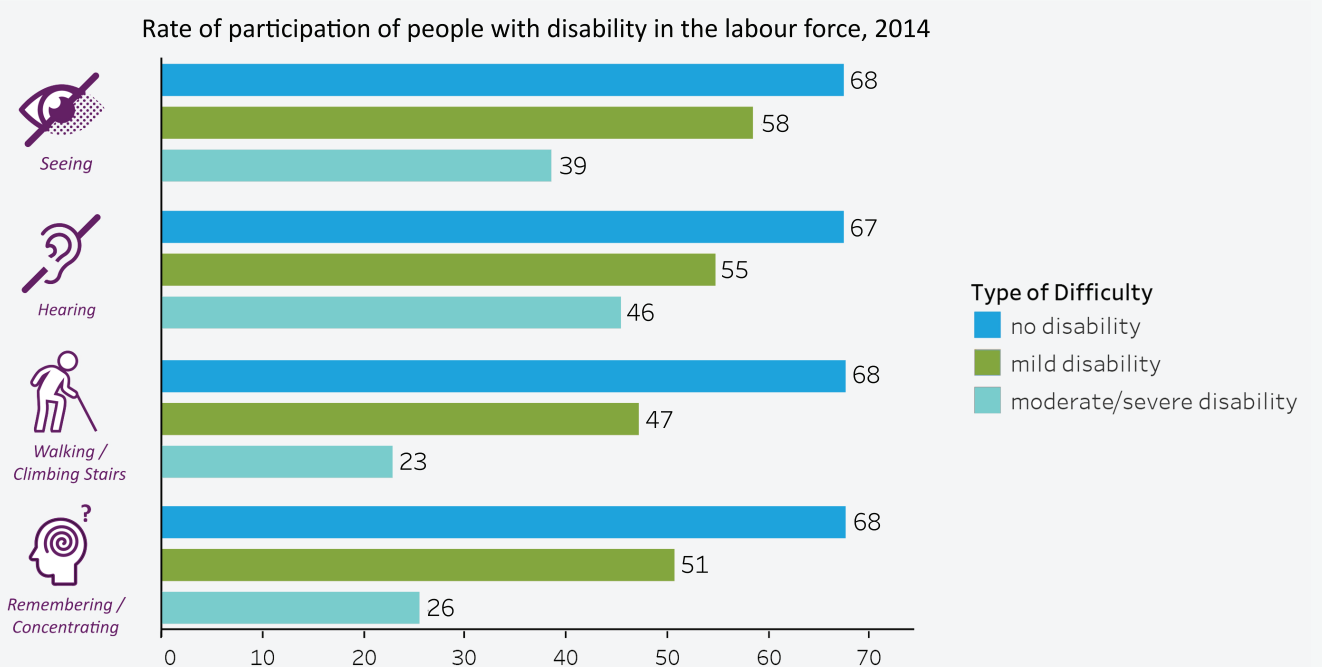


People with disability are less likely to be employed

In 2014, people with disability aged 15-64 were found to be **less likely to participate** in the labour force, especially those with moderate or severe disability.

Disability Prevalence refers to the *number* of people with one or more disabilities of any type.

Disability Prevalence Rate, or DPR is the *percentage* of the population with one or more disabilities of any type.



Sources - 2014 Population and Housing Census, 2019 Intercensal Survey

Copyright © Myanmar Information Management Unit 2021. This product is based on current available information and is provided for reference purposes only. The boundaries and names shown and designations used on MIMU products do not imply any opinion or endorsement of these terms or boundaries by the United Nations. MIMU products are not for sale and can be used free of charge with attribution as per MIMU Terms and Conditions of Use. Please share any updates with us via info.mimu@undp.org.